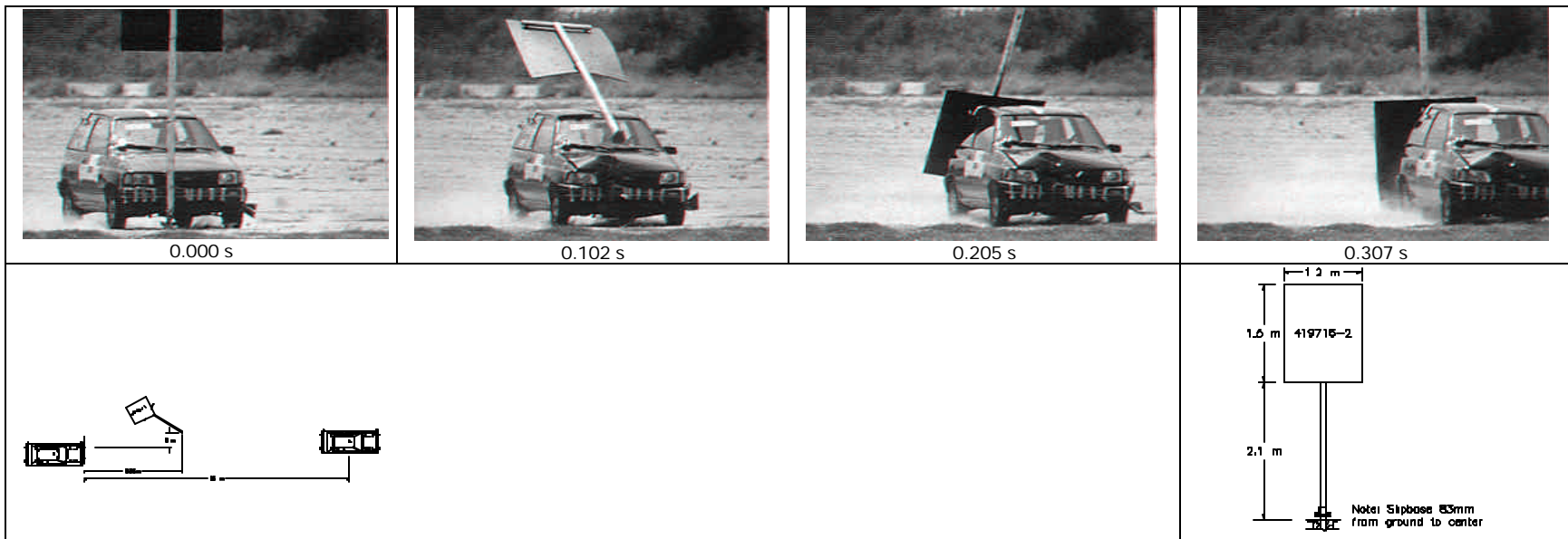


1 General Information		Impact Conditions	Test Article
Test Agency .....	Texas Transportation Institute	Speed (km/h) .....	35.8 (22.3 mi/h)
Test No. ....	419716-1	Angle (deg) .....	0
Date .....	09/05/96	Exit Conditions	Debris Scatter Area (m)
Test Article		Speed (km/h) .....	32.6 (52.5 mi/h)
Type .....	Single Slip Base Sign Support	Angle (deg) .....	0
Name .....	Slip-base in Foam Foundation	Occupant Risk Values	Vehicle Damage
Installation Height (m) .....	2.13 (7.0 ft)	Impact Velocity (m/s)	Exterior
Size and/or dimension and material of key elements .....		x-direction .....	1.1 (3.6 ft/s)
Soil Type and Condition .....	Standard Soil, Damp	y-direction .....	0.6 (2.0 ft/s)
Test Vehicle		Ridedown Accelerations (g's)	Interior
Type .....	Production	x-direction .....	-0.3
Designation .....	820C	y-direction .....	0.3
Model .....	1990 Ford Festiva	Max. 0.050-s Average (g's)	Post-Impact Behavior
Mass (kg) Curb .....	847 (1866 lb)	x-direction .....	-1.0
Test Inertial .....	820 (1806 lb)	y-direction .....	0.7
Dummy .....	75 (165 lb)	z-direction .....	N/A
Gross Static .....	896 (1974 lb)		
			Max. Roll Angle (deg) .....
			3.1
			Max. Pitch Angle (deg) .....
			-4.1
			Max. Yaw Angle (deg) .....
			-1.1

Figure 9. Summary of Results For Test 419716-1, NCHRP Report 350 Test 3-60.



1 General Information		Impact Conditions	Test Article Debris Scatter Area (m)
Test Agency .....	Texas Transportation Institute	Speed (km/h) .....	Width .....
Test No. ....	419716-2	Angle (deg) .....	Length .....
Date .....	09/05/96		
Test Article		Exit Conditions	Vehicle Damage
Type .....	Single sign support	Speed (km/h) .....	Exterior
Name .....	Slip base sign in foam base	Angle (deg) .....	VDS .....
Installation Height (m) .....	2.13 (7 ft)		CDC .....
Size and/or dimension and material of key elements .....		Occupant Risk Values	Interior
Soil Type and Condition .....	Standard soil, damp	Impact Velocity (m/s)	OCDI .....
Test Vehicle		x-direction .....	Maximum Exterior
Type .....	Production	y-direction .....	Vehicle Crush (mm) .....
Designation .....	820C	Ridedown Accelerations (g's)	Max. Occ. Compartment Deformation (mm) .....
Model .....	1990 Ford Festiva	x-direction .....	
Mass (kg) Curb .....	847 (1866 lb)	y-direction .....	
Test Inertial .....	820 (1806 lb)	Max. 0.050-s Average (g's)	
Dummy .....	75 (165 lb)	x-direction .....	Post-Impact Behavior
Gross Static .....	896 (1974 lb)	y-direction .....	Max. Roll Angle (deg) .....
		z-direction .....	Max. Pitch Angle (deg) .....
			Max. Yaw Angle (deg) .....

Figure 15. Summary of Results For Test 419716-2, NCHRP Report 350 Test 3-61.